

SoWN Forum

19th March 2026

Helen Santer, Head of Partnership, SC1 London

**LONDON'S GROWING
HEALTH AND LIFE SCIENCES
INNOVATION DISTRICT.**



***LONDON'S
GROWING
HEALTH AND
LIFE SCIENCES
INNOVATION
DISTRICT.***

SC1 London is a growing ecosystem of people, places and partners dedicated to world-leading innovation in health and life sciences, all in south central London.

**LONDON'S GROWING
HEALTH AND LIFE SCIENCES
INNOVATION DISTRICT.**



SC1 London Health & Life Sciences Innovation District

Seven founding partners including a world-renowned university, a charitable foundation, flagship teaching hospitals, local government and communities in an iconic **part of London at the cutting-edge of healthcare.**

Three innovation clusters: **BioMed cluster** at London Bridge, **MedTech cluster** at the Waterloo Campus, and the **Mind & Body cluster** at Denmark Hill.

A brand-new **Catalyst Strategy to 2028.**

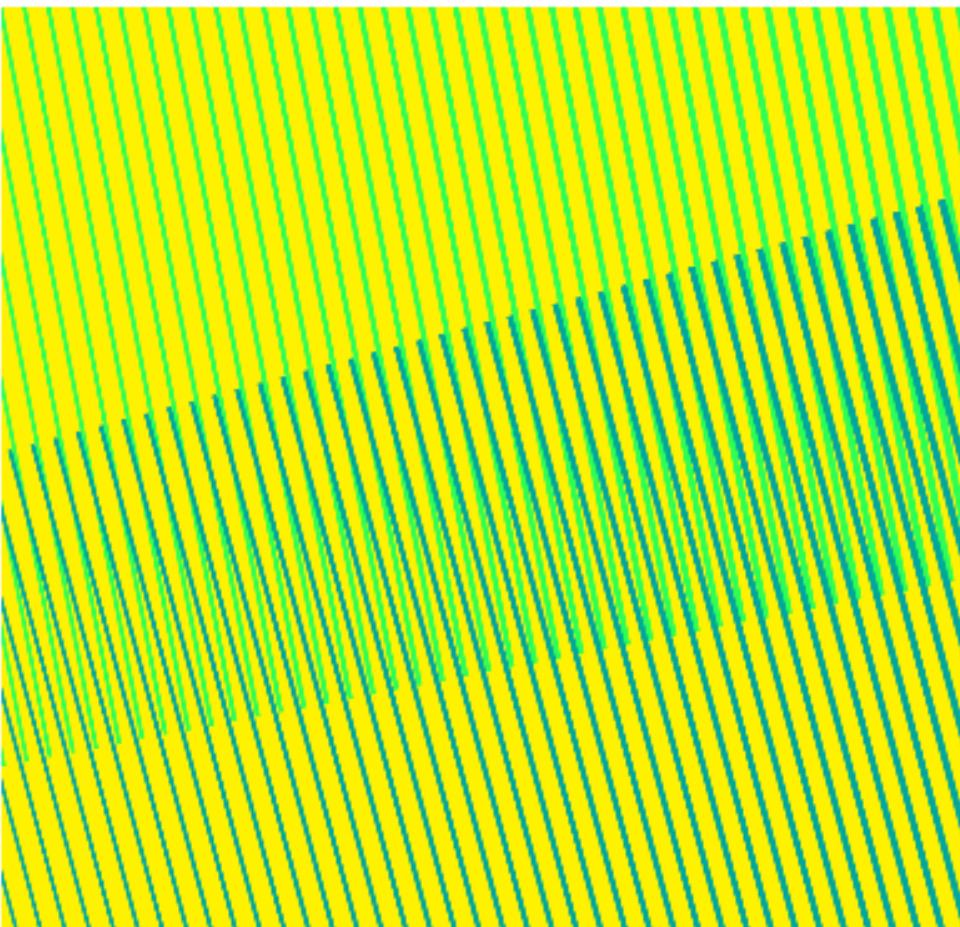


**LONDON'S GROWING
HEALTH AND LIFE SCIENCES
INNOVATION DISTRICT.**

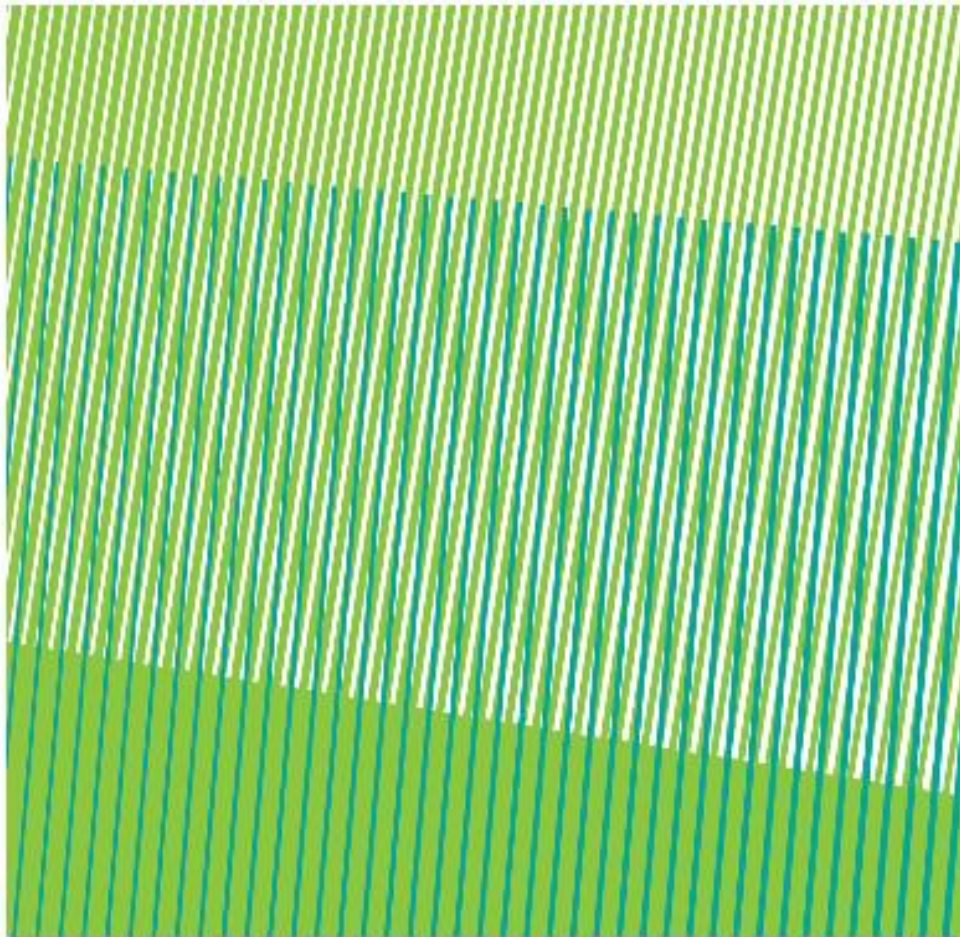


Our strategic pillars

**INNOVATION &
ENTERPRISE**



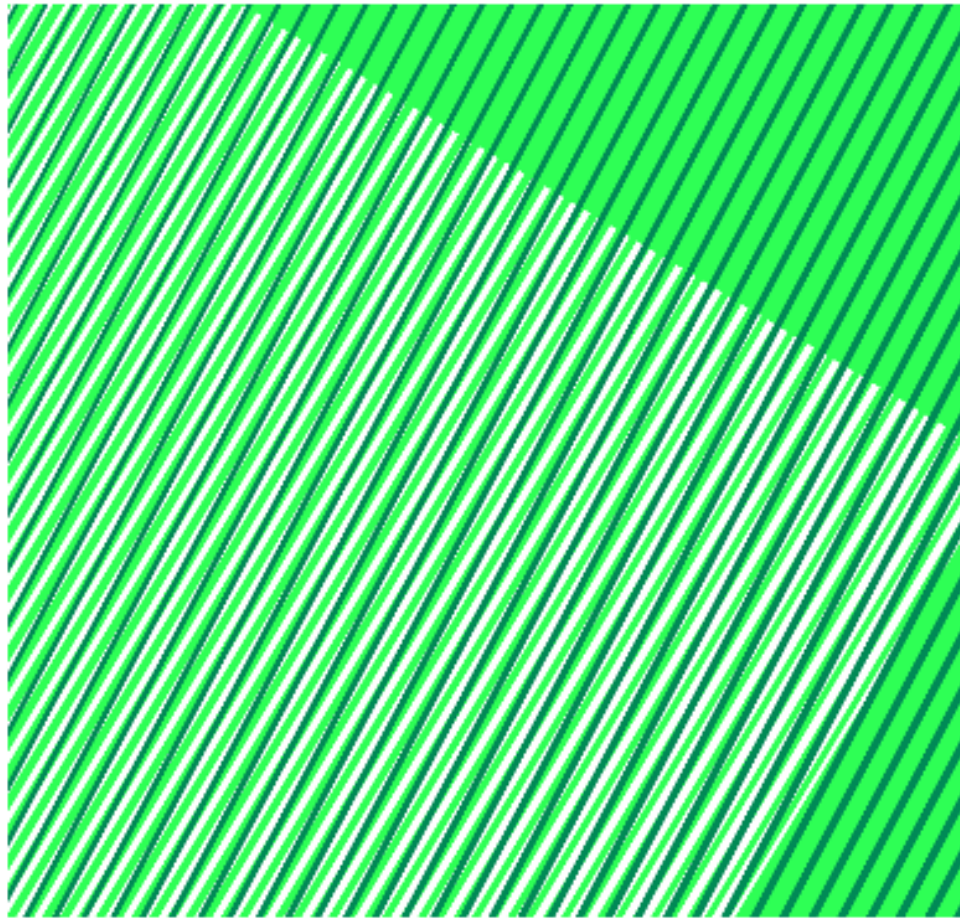
PLACE



NETWORKS



**COMMUNITY &
TALENT**



**LONDON'S GROWING
HEALTH AND LIFE SCIENCES
INNOVATION DISTRICT.**



World-class clusters

We will support the growth of innovation clusters, creating a thriving ecosystem.

A new **BioTech innovation cluster** at the London Bridge campus, mirroring the co-location model of the London Institute for Healthcare Engineering and **supporting development at the Denmark Hill campus.**

Convene. Promote. Advocate. Celebrate.



**LONDON'S GROWING
HEALTH AND LIFE SCIENCES
INNOVATION DISTRICT.**



A premier destination

Real estate developments with planning permission across SC1 include: Snowfields Quarter, Royal Street, Evelina Expansion (MedTech cluster), Newcomen St (BioMed cluster).

Undergoing mapping and analysis to tell the story of SC1 London to potential investors, occupiers and beyond.

Position SC1 London as a prime location to invest and locate.



**LONDON'S GROWING
HEALTH AND LIFE SCIENCES
INNOVATION DISTRICT.**



Building a strong and inclusive talent pipeline

New employment & skills senior programme officer across Southwark and Lambeth, jointly funded across the two boroughs.

SC1 Skills and Employment Action Plan with commitments to an **SC1 work experience programme**, **SC1 internship programme** and **SC1 careers resource hub**.

Engage. Inspire. Create.



**LONDON'S GROWING
HEALTH AND LIFE SCIENCES
INNOVATION DISTRICT.**

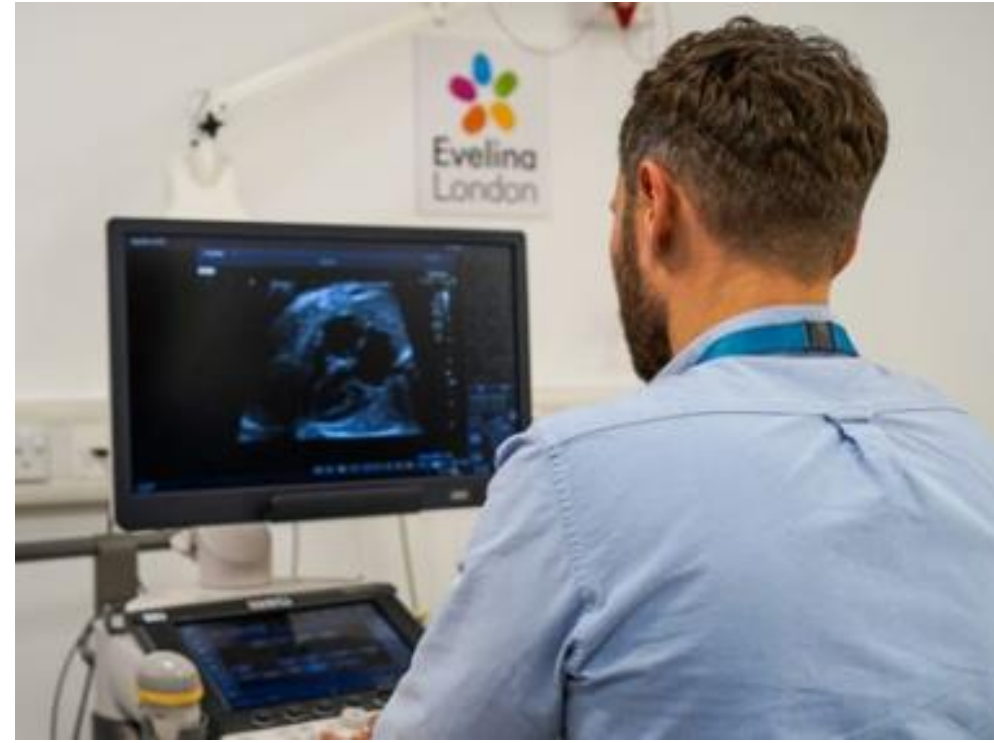
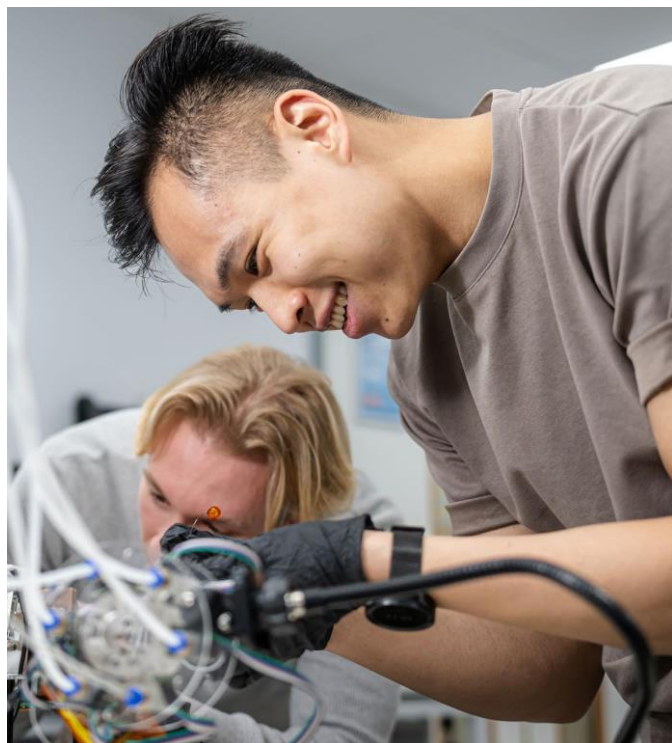


Building a strong and inclusive talent pipeline

SC1 is on the **Life Sciences Sector Talent Board**, led by GLA as part of Inclusive Talent Strategy.

SC1 is part of a pan-London cluster bid to host **Life Sciences Sector Talent Hub**.

Inform. Empower. Upskill.



**LONDON'S GROWING
HEALTH AND LIFE SCIENCES
INNOVATION DISTRICT.**



**LONDON'S GROWING
HEALTH AND LIFE SCIENCES
INNOVATION DISTRICT.**



**SC1
LONDON**